

### **SIGN-ON INSTRUCTIONS FOR REMOTE ACCESS:**

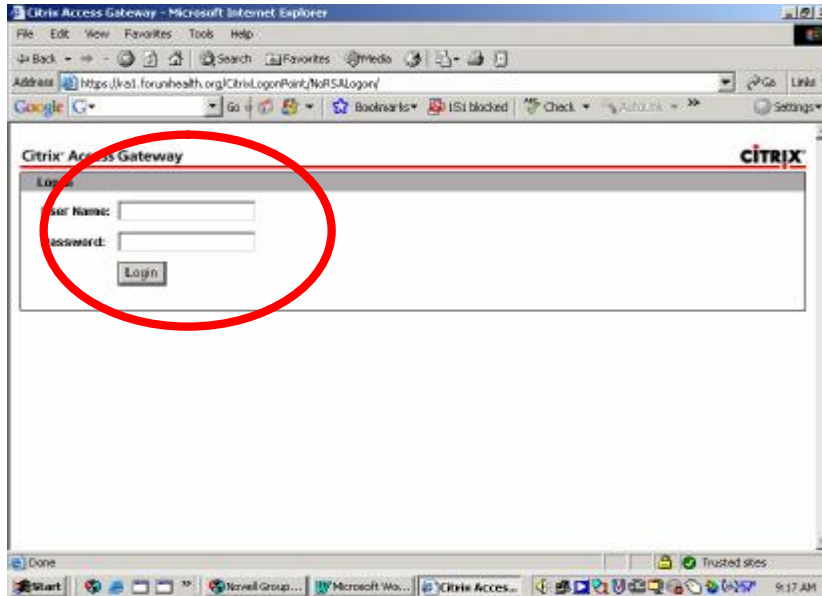
Access the Forum Health web page using <http://www.forumhealth.org>.



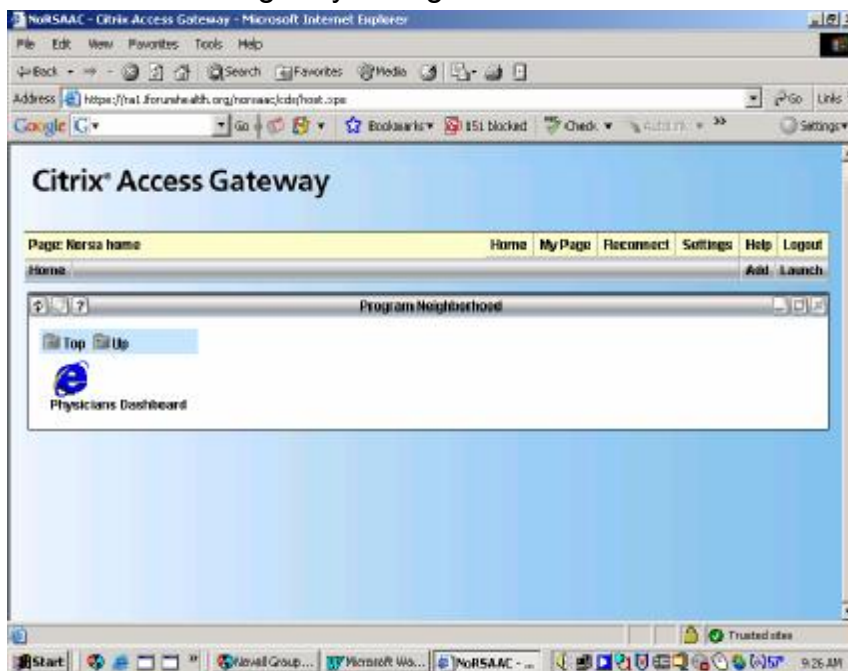
Click on the **Secure Login** link. The following appears:



- Select **Click here for remote access to Forum Health** and the following screen will appear.



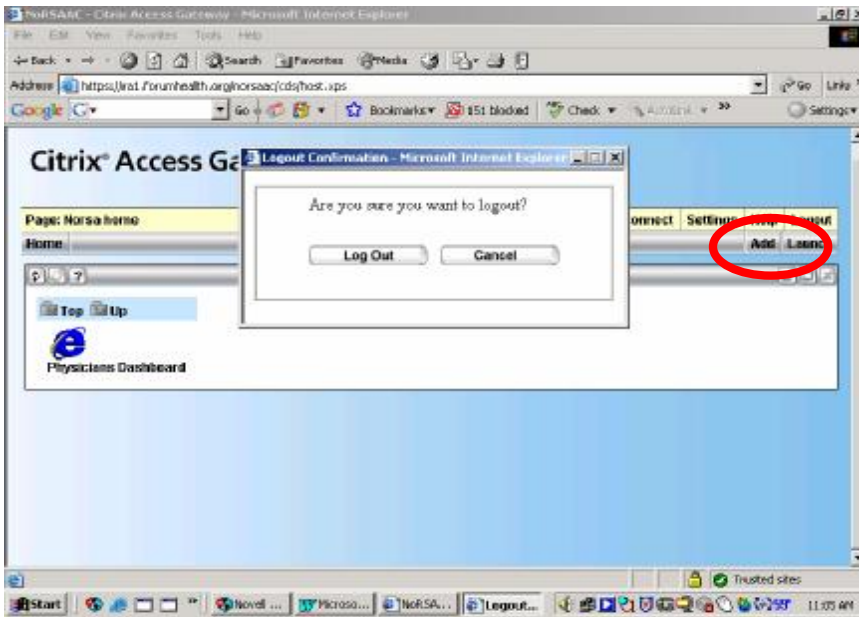
- Enter your Username in the **User Name** box (User Name is **your** Network account).  
**Note** – For physicians your network account is a **p** followed by your doctor number, i.e. **P213456**
- Enter your Network password in the **Password** box.  
**Note** – If you previously did not have a network password, enter **FHRemote** (case Sensitive) as your network password in the **Password** box.
- Click on **Login**.
- Citrix will configure your login and the **Citrix Access Gateway** screen will appear.



- Double-click on the **Physician Dashboard** icon to open the application. You can now login and proceed with the application as you normally do.

### CLOSING INSTRUCTIONS:

- **Logout** of Physician Dashboard and you will be back at the Physician Dashboard login screen.
- Click on the **X** in the top right hand corner. You will be back at the **Citrix Access Gateway** screen.
- Click on the **LOGOUT** button and another window will open asking “**Are you sure you want to log out?**”. Click on **LOG OUT**.



- Another window will open stating: **YOU HAVE LOGGED OUT SUCCESSFULLY. CLICK OK TO CLOSE THIS BROWSER WINDOW**, click on **OK**.